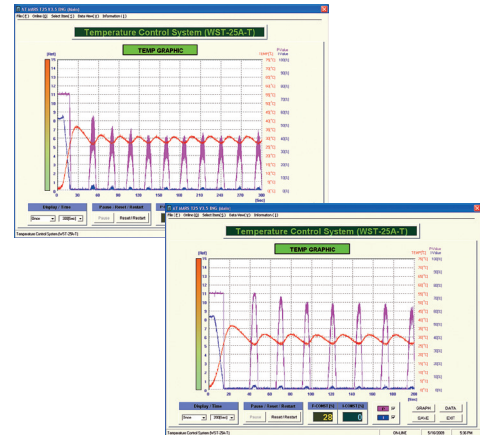
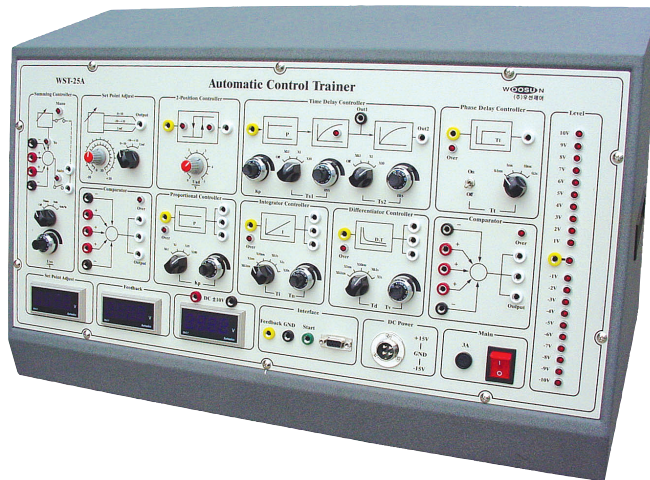


WST-25A

Automatic Control Trainer (P · I · D Control)



Experiment

- Control with proportional controller
- Control with P · I / P · I · D controller
- Control with two-position controller
- Control which has 2-position controller and delayed feedback
- Control with two-position controller and flexible delayed feedback

Specification

■ WST-25A-M Main Control System

- Main Voltage : 1 Phase 220 ~ 240V / 50 / 60Hz
- Set Point Adjust & Summing Controller Block
- 2-Position Controller & Comparator Block
- Time Delay & Phase Delay Controller Block
- Proportional & Integrator & Differentiator Controller Block

- Interface Block
- Level Block
- Meter Block
- DC Power & Main Switch Block



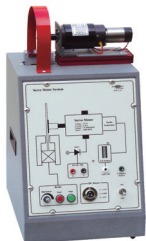
■ WST-25A-L Level Control System

- Level Range : 0 ~ 300mm (0 ~ 10[V])
- Liquid & Voltage : 1.9l/min & 10[V]
- Variable Method : Continuous Variable
- Control Voltage : 0 ~ 10[V]
- Pump : 1l/min
- Level Sensor



■ WST-25A-T Temperature Control System

- Heater : 100V, 100W
- Temperature Sensor : PT 100Ω
- Control Voltage : 0 ~ 10[V]
- Cooling Fan : AC220V
- Temperature Meter
- Window



■ WST-25A-S DC Servo Control System

- Motor : DC Servo Motor
- Tacho Generator : DC 0 ~ 10V
- Brake : Eddy Current Type
- Control Method : PWM

Accessory

- Experiment Manual : 1Copy
- Communication Cable (USB) : 1EA
- Test Lead (Banana Plug) : 1Unit
- Power Cable : 1EA
- Monitoring Software : 1Copy
- Dust Cover : 1Set

* Product's design and appearance can be changed without any notice.