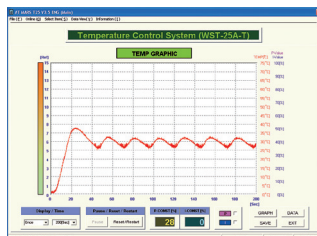
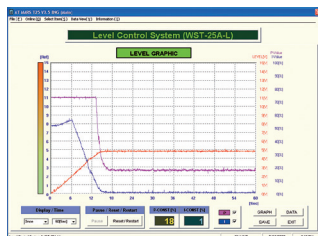


WST-25

Automatic Control Trainer (P · I · D Control)

Experiment

- Control with Two position controller
- Control which has two position controller and delayed feedback
- Control with two position controller and flexible delayed
- Control with proportional controller
- P · I and P · I · D Controller
- P · I · D Control with Parallel and Incremental structure
- P · I Control of control system with delay element
- Temperature control with 2-position controller
- Temperature control with P · I · D controller
- Oscillating frequency control with P · I · D controller
- Generator voltage control with generator oscillating frequency control



Specification

- Main Voltage : 1 Phase 220 ~ 240V / 50/60Hz
- Working Table & Board
 - Frame : 3 step
- Module Storage Cabinet : 2EA

Experiment Module

- | | |
|---|---|
| ■ WST-25-01
Set Point Adjust Module | ■ WST-25-02
Comparator Module |
| ■ WST-25-03
Proportional Controller Module | ■ WST-25-04
Integrator Controller Module |
| ■ WST-25-05
Differential Controller Module | ■ WST-25-06
Summing Point Module |
| ■ WST-25-07
Voltage Indicator Module | ■ WST-25-08
Two Position Controller Module |
| ■ WST-25-09
Time Delay Module | ■ WST-25-10
Phase Delay Module |
| ■ WST-25-11
Phase Control Rectifier Module | ■ WST-25-12
Generator Load Module |
| ■ WST-25-13
Voltage Divider Module | ■ WST-25-14
DC Power Supply Module |
| ■ WST-25-15
Power Supply Module | ■ WST-25-16
Interface Module |
| ■ WST-25-17
Transducer Module | ■ WST-25-18
Motor & Generator Control Module |

WST-25

Automatic Control Trainer (P · I · D Control)

- WST-25-19
Matching Amplifier Module
- WST-25-M1
DC Voltmeter Module
- WST-25-M3
AC Voltmeter Module
- WST-25-M2
DC Ammeter Module
- WST-25-M4
AC Ammeter Module



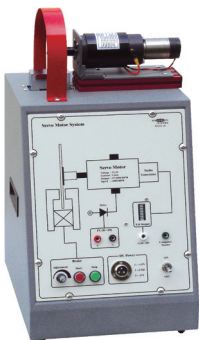
■ WST-25A-L Level Control System

- Level Range : 0 ~ 300mm (0 ~ 10[V])
- Continuous Control
- Control Voltage : 0 ~ 10[V]
- Pump : 1l/min
- Level Sensor



■ WST-25A-T Temperature Control System

- Heater : 100V, 100W
- Temperature Sensor : PT 100Ω
- Control Voltage : 0 ~ 10[V]
- Cooling Fan : DC12V
- Temperature Meter
- Window



■ WST-25A-S DC Servo Control System

- Motor : DC Servo Motor
- Speed Output
 - Analog 0 ~ 10[V] per 0 ~ 2500[rpm]
- Brake : Eddy Current Type
- Control Method : Continuous

Accessory

- Experiment Manual : 1Copy
- Communication Cable (USB) : 1EA
- Test Lead (Banana Plug) : 1Unit
- Power Cable : 1EA
- Monitoring Software : 1Copy
- Dust Cover : 1Set

Option

- Function Generator : 1EA
 - 1MHz
 - Output : 3V

* Product's design and appearance can be changed without any notice.