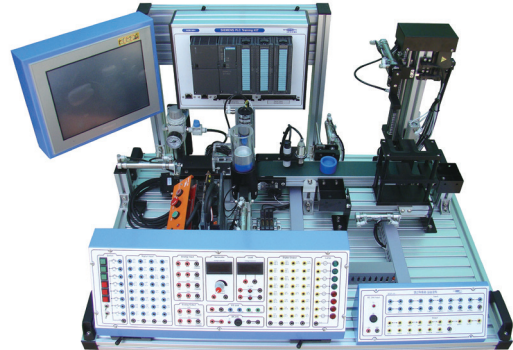


WSS-4X

Mechatronics Trainer

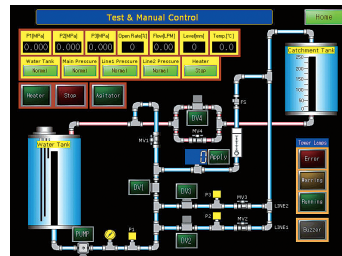
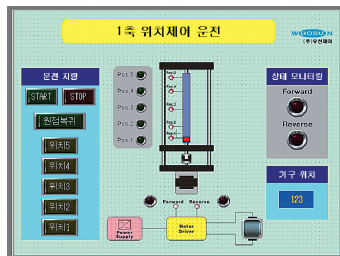


Specification

■ Main System

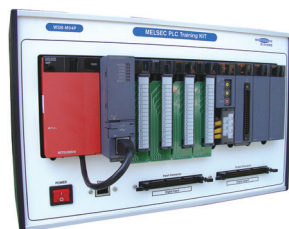
- Actuator Part
 - Supplying Part / Conveyor / Loading Part / Warehouse
- HMI
 - Pro Face (10.4")
- AC Servo Motor (Mitsubishi)
- Servo Amp (Mitsubishi)
- PLC Combination Trainer

■ HMI



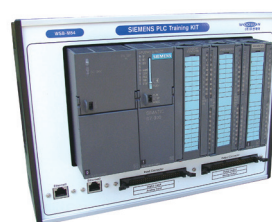
■ P. L. C Module

- Mitsubishi Melsec-Q



- Digital Input Module
- Digital Output Module
- A/D & D/A Module
- Position Module

- Siemens STEP7-300



- Digital Input Module
- Digital Output Module
- A/D & D/A Module

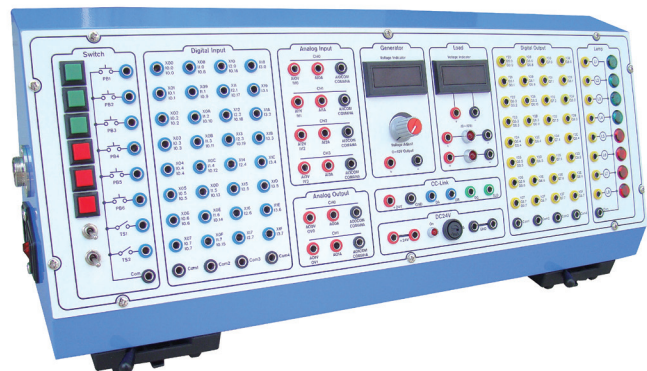
* Product's design and appearance can be changed without any notice.

WSS-4X

Mechatronics Trainer

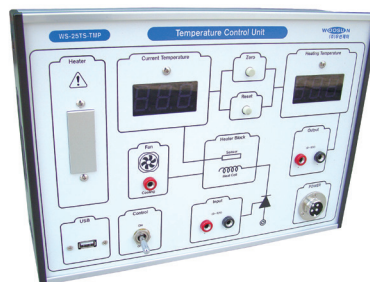
■ P. L. C Combination System

- P. L. C Input Part
 - Input Switch
 - Input Terminal
- P. L. C Output Part
 - Output Lamp
 - Output Terminal
- P. L. C Analog Part
 - Analog Input
 - Analog Output
 - Analog Generator



■ P. L. C Application Trainer

- Temperature Control Trainer



- DC Servo Control Trainer



- Temperature Control Trainer



Accessory

- Experiment Manual
- Program Tool
- Power Cable
- Communication Cable
- Test Lead (Banana Plug)
- Dust Cover

※ All P. L. C application equipments can be controlled by all of PLC such as SIMENS, MITSUBISHI, LS, Allen-Bradley