

# WSP-4

## Pneumatic Trainer



### Specification

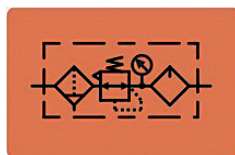
#### Working Table & Board

- Working Table (Wooden)
  - Size : 1500(W) \* 700(D) \* 870(H)mm
  - Drawer : 8EA
  - Caster : 4EA
- Air Compressor
  - AC 220V ~ 240V / 50 / 60Hz
  - 250W
  - Tank : 5 l
- Aluminum Profile Board
  - Size : 1100(W) \* 750(D)mm

#### Pneumatic Basic Module



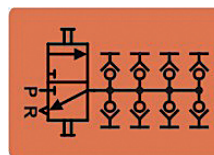
- WSP-A4101 : 1EA  
Air Service Unit



- Air Filter, Regulator, Lubricator
- Shut-Off Valve
- Pressure Range : 0.5 ~ 10 kgf/cm<sup>2</sup>



- WSP-A4138 : 1EA  
Air Distributor



- Pressure Range : 1 ~ 10 kgf/
- Input : 1EA
- Output : 8EA

01

02

03

04

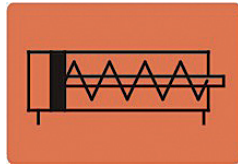
# WSP-4

## Pneumatic Trainer

### ▣ Pneumatic Cylinder Module



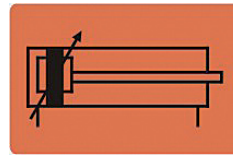
- WSP-A4102 : 1EA  
Single Acting Cylinder



- Pressure Range : 0.5 ~ 10 kgf/cm<sup>2</sup>
- Stroke : 75mm
- Including Cushion

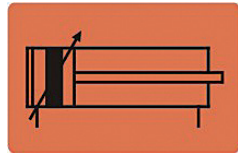


- WSP-A4103 : 2EA  
Double Acting Cylinder



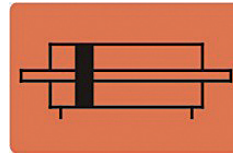
- Pressure Range : 0.5 ~ 10 kgf/cm<sup>2</sup>
- Stroke : 125mm
- Including Cushion

- WSP-A4104 : 1EA  
Double Acting Cylinder



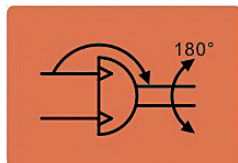
- Pressure Range : 0.5 ~ 10 kgf/cm<sup>2</sup>
- Stroke : 125mm
- Including Cushion / Flow Control / Reed Switch

- WSP-A4142 : 1EA  
Double Rod Cylinder



- Pressure Range : 0.5 ~ 10 kgf/cm<sup>2</sup>
- Stroke : 125mm
- Rubber Cushion / Flow Control / Reed Switch

- WSP-A4143 : 1EA  
Rotary Cylinder



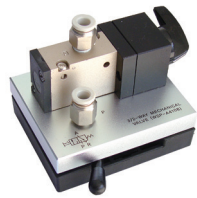
- Pressure Range : 1.5 ~ 10 kgf/cm<sup>2</sup>
- Rotary Angle : 0 ~ 180°

\* Product's design and appearance can be changed without any notice.

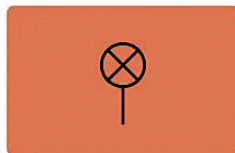
# WSP-4

## Pneumatic Trainer

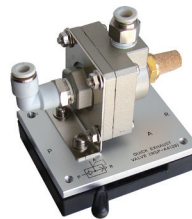
### ▣ Pneumatic Module



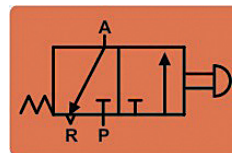
- WSP-A4105 : 2EA  
Air Pilot Lamp



- Pressure Range : 1 ~ 8 kgf/cm<sup>2</sup>
- Red & Green Lamp

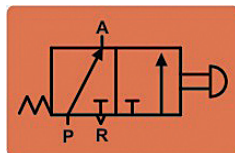


- WSP-A4106 : 2EA  
3/2Way Push Button Valve



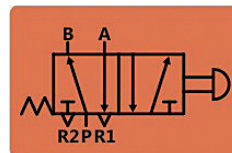
- Pressure Range : 1 ~ 10 kgf/cm<sup>2</sup>
- Normal Close
- Spring Return

- WSP-A4107 : 2EA  
3/2Way Push Button Valve



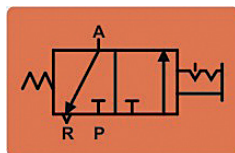
- Pressure Range : 1 ~ 10 kgf/cm<sup>2</sup>
- Normal Open
- Spring Return

- WSP-A4120 : 1EA  
5/2Way Push Button Valve



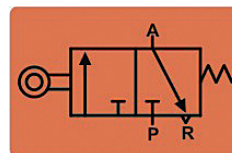
- Pressure Range : 1 ~ 10 kgf/cm<sup>2</sup>
- Spring Return

- WSP-A4108 : 1EA  
3/2Way Selector Switch Valve



- Pressure Range : 1 ~ 10 kgf/cm<sup>2</sup>
- Normal Close
- Spring Return

- WSP-A4110 : 2EA  
3/2Way Limit Switch Valve



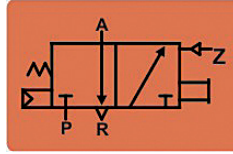
- Pressure Range : 1 ~ 10 kgf/cm<sup>2</sup>
- Normal Close
- Spring Return

01  
02  
03  
04

# WSP-4

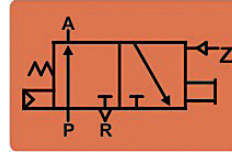
## Pneumatic Trainer

- WSP-A4111 : 1EA  
3/2Way Pilot Valve



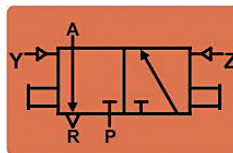
- Pressure Range : 1.5 ~ 7 kgf/cm<sup>2</sup>
- Pilot Pressure Range : 1.5 ~ 7 kgf/cm<sup>2</sup>
- Normal Close
- Piston Return

- WSP-A4112 : 1EA  
3/2Way Pilot Valve



- Pressure Range : 1.5 ~ 7 kgf/cm<sup>2</sup>
- Pilot Pressure Range : 1.5 ~ 7 kgf/cm<sup>2</sup>
- Normal Open
- Piston Return

- WSP-A4113 : 1EA  
3/2Way Double Pilot Valve



- Pressure Range : 1 ~ 7 kgf/cm<sup>2</sup>
- Pilot Pressure Range : 1 ~ 7 kgf/cm<sup>2</sup>
- Pilot Return

- WSP-A4121 : 1EA  
5/2Way Pilot Valve



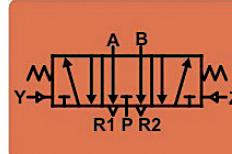
- Pressure Range : 1.5 ~ 7 kgf/cm<sup>2</sup>
- Pilot Pressure Range : 1 ~ 7 kgf/cm<sup>2</sup>
- Piston Return

- WSP-A4122 : 1EA  
5/2Way Double Pilot Valve



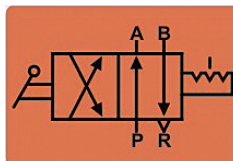
- Pressure Range : 1 ~ 7 kgf/cm<sup>2</sup>
- Pilot Pressure Range : 1 ~ 7 kgf/cm<sup>2</sup>
- Pilot Return

- WSP-A4124 : 1EA  
5/3Way Double Pilot Valve



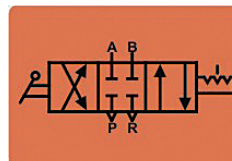
- ABR Connected
- Pressure Range : 1 ~ 10 kgf/cm<sup>2</sup>
- Pilot Pressure Range : 1 ~ 10 kgf/cm<sup>2</sup>
- Exhaust Center Type
- Pilot Return

- WSP-A4118 : 1EA  
4/2Way Hand Lever Valve



- Pressure Range : 0 ~ 8 kgf/cm<sup>2</sup>
- Spool Type

- WSP-A4119 : 1EA  
4/3Way Hand Lever Valve



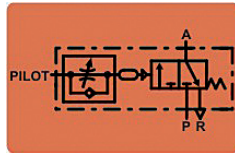
- Pressure Range : 0 ~ 8 kgf/cm<sup>2</sup>
- All Port Block
- Spool Type

\* Product's design and appearance can be changed without any notice.

# WSP-4

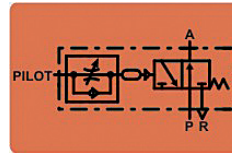
## Pneumatic Trainer

- WSP-A4115 : 1EA  
Time Delay Valve



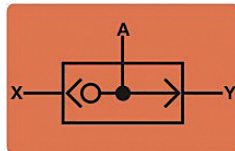
- Pressure Range : 0 ~ 8.5 kgf/cm<sup>2</sup>
- Delay Time : 0 ~ 10sec
- Normal Close

- WSP-A4116 : 1EA  
Time Delay Valve



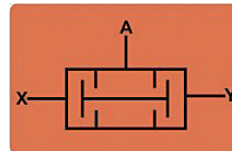
- Pressure Range : 0 ~ 8.5 kgf/cm<sup>2</sup>
- Delay Time : 0.5 ~ 6sec
- Normal Open

- WSP-A4126 : 2EA  
OR Valve



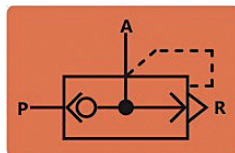
- Pressure Range : 0.5 ~ 9.9 kgf/cm<sup>2</sup>
- X, Y → A : 711NI/min
- OR Logic

- WSP-A4127 : 2EA  
And Valve



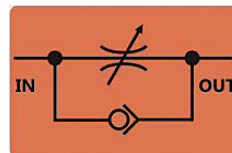
- Pressure Range : 0.5 ~ 9.9 kgf/cm<sup>2</sup>
- X, Y → A : 480NI/min
- AND Logic

- WSP-A4128 : 1EA  
Quick Exhaust Valve



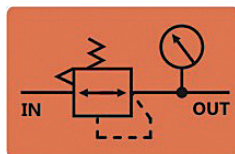
- Pressure Range : 0 ~ 10 kgf/cm<sup>2</sup>
- P → A : 780NI/min
- A → R : 890NI/min

- WSP-A4129 : 4EA  
Flow Control Valve (Single Way)



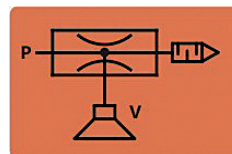
- Pressure Range : 0.5 ~ 10 kgf/cm<sup>2</sup>
- Out → In : 340NI/min
- In → Out : 250NI/min

- WSP-A4131 : 1EA  
Pressure Regulator



- Max. Pressure : 10 kgf/cm<sup>2</sup>
- Setting Range : 0 ~ 10 kgf/cm<sup>2</sup>
- Relief Type

- WSP-A4132 : 1EA  
Vacuum Generator & Pad



- Pressure Range : 1.5 ~ 10 kgf/cm<sup>2</sup>
- Venturi Principle
- Air Consumption : 15NI/min

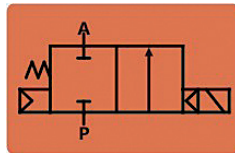
# WSP-4

## Pneumatic Trainer

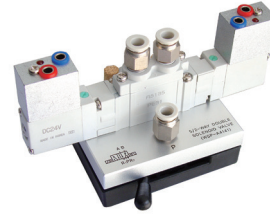
### ▣ Electro - Pneumatic Module



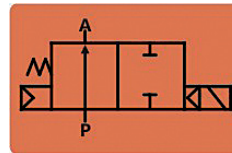
- WSP-A4136 : 1EA  
2/2Way Solenoid Valve



- Pressure Range : 1.5 ~ 7 kgf/cm<sup>2</sup>
- Normal Close
- Response Time : 30ms
- DC 24V

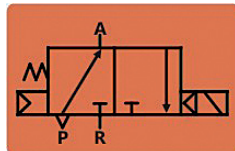


- WSP-A4137 : 1EA  
2/2Way Solenoid Valve



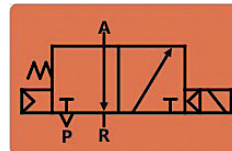
- Pressure Range : 1.5 ~ 7 kgf/cm<sup>2</sup>
- Normal Open
- Response Time : 30ms
- DC 24V

- WSP-A4114 : 1EA  
3/2Way Solenoid Valve



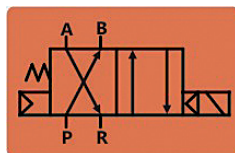
- Pressure Range : 1.5 ~ 7 kgf/cm<sup>2</sup>
- Normal Open
- Response Time : 30ms
- DC 24V

- WSP-A4117 : 2EA  
3/2Way Solenoid Valve



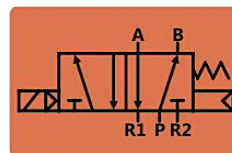
- Pressure Range : 1.5 ~ 7 kgf/cm<sup>2</sup>
- Normal Close
- Response Time : 30ms
- DC 24V

- WSP-A4139 : 1EA  
4/2Way Solenoid Valve



- Pressure Range : 1.5 ~ 7 kgf/cm<sup>2</sup>
- Response Time : 30ms
- DC 24V

- WSP-A4123 : 2EA  
5/2Way Solenoid Valve



- Pressure Range : 1.5 ~ 7 kgf/cm<sup>2</sup>
- Response Time : 26ms
- DC 24V

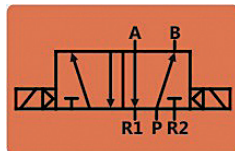
\* Product's design and appearance can be changed without any notice.



# WSP-4

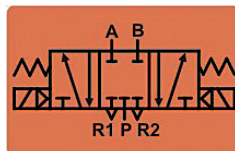
## Pneumatic Trainer

- WSP-A4141 : 1EA  
5/2Way Double Solenoid Valve



- Pressure Range : 1 ~ 7 kgf/cm<sup>2</sup>
- Response Time : 22ms
- DC 24V

- WSP-A4140 : 1EA  
5/3Way Double Solenoid Valve



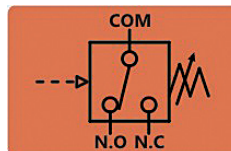
- All Block
- Pressure Range : 2 ~ 7 kgf/cm<sup>2</sup>
- Close Center Type
- Response Time : 38ms - DC 24V

- WSP-A4125 : 1EA  
5/3Way Double Solenoid Valve



- PAB Connected
- Pressure Range : 2 ~ 7 kgf/cm<sup>2</sup>
- Pressure Center Type
- Response Time : 38ms - DC 24V

- WSP-A4134 : 1EA  
Pressure Switch

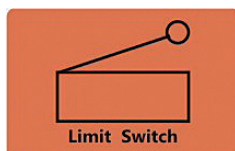


- Pressure Range : 0.5 ~ 8 kgf/cm<sup>2</sup>
- Control Setting Pressure
- Display Lamp

### Electric Module



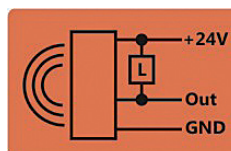
- WSP-A4201 : 4EA  
Limit Switch



- Contact : 1c
- DC 24V
- Left & Right



- WSP-A4202 : 1EA  
Proximity Sensor



- Detection Distance : 8mm
- NPN Open Collector
- DC 10 ~ 30V

01

02

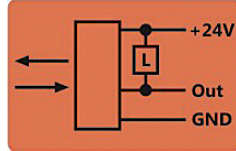
03

04

# WSP-4

## Pneumatic Trainer

- WSP-A4203 : 1EA  
Photo Sensor



- Detection Distance : 100mm
- NPN Open Collector
- DC 10 ~ 30V

### ■ Electric Sequence Module



- PH-E301 : 1EA  
Electric Distribution Module
- Lamp(Red/Green/Yellow) : 6EA



- PH-E302 : 1EA  
Push Button Module
- Push Button (Non-Lock Type) : 2EA
- Push Button (Lock Type) : 1EA
- Contact : 2c



- PH-E303 : 3EA  
Relay Module
- Power : DC 24V
- Relay : 3EA
- Contact : 4c
- PH-E305 : 1EA  
Emergency Stop Button Module
- Contact : 1a, 1b
- Lock Type Switch
- PH-E307 : 1EA  
Counter Module
- Power : DC 24V
- Up/Down Counter
- Preset : 0 ~ 9999
- Input Signal : Up / Down / Reset
- Contact : 1c

- PH-E304 : 1EA  
Lamp & Buzzer Module
- Power : DC 24V
- Lamp (Red & Green) : 4EA
- Buzzer : 1EA
- PH-E306 : 1EA  
Timer Module
- Power : DC 24V
- On Delay Timer : 1EA
- Delay Time : 0 ~ 99sec
- Off Delay Timer : 1EA
- Contact : 2a, 2b
- PH-E308 : 1EA  
DC Power Switch Module
- Input Power 1 Phase 220 ~ 240V / 50/60Hz
- Output : DC 24V / 2A
- Short Circuit Protection Function & Alarm

### Accessory

- Experiment Manual : 1Copy
- Test Lead (Banana Plug) : 1Unit
- Tube Cutter : 1EA
- Extra Fitting & Silencer : 1Unit
- Power Cable : 1EA
- Plastic Tube : 1Roll
- T Type Connector : 10EA
- Dust Cover : 1EA

### Option

- Magnetic Pneumatic Symbol : 1Set

\* Product's design and appearance can be changed without any notice.