

WSH-4

Hydraulic Trainer



01

02

03

04

Specification

Working Table & Board

- Working Table
 - Size : 1600(W) * 700(D) * 910(H)mm
 - Drawer : 4 or 8EA(Selective)
 - Caster : 4EA
- Aluminum Profile Board
 - Size : 1100(W) * 750(D)mm
- Flow Measuring Unit
 - Max. Capacity : 2l
 - Coupling : 4EA
- Hydraulic Unit
 - Motor : 1Phase 220V (1HP)
 - Operation Pressure : 40 ~ 60 kgf/cm²
 - Oil Tank : 30l
- Hand Lever
 - Hand Lever
 - Suction Filter : 1EA
- Pressure Gauge
 - Pressure Gauge
 - Level Meter / Temperature Meter

Hydraulic Hose

- WSH-BC251 : 2EA
 - Hydraulic Hose
 - Max. Pressure : 120 kgf/cm²
 - 1500mm
- WSH-BC252 : 8EA
 - Hydraulic Hose
 - Max. Pressure : 120 kgf/cm²
 - 1000mm
- WSH-BC253 : 10EA
 - Hydraulic Hose
 - Max. Pressure : 120 kgf/cm²
 - 600mm

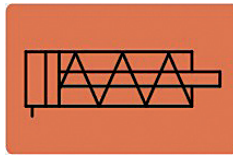
WSH-4

Hydraulic Trainer

Hydraulic Cylinder

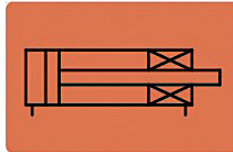


- WSH-BC101 : 1EA
Single Acting Cylinder



- Operating Pressure : 60 kgf/cm²
- Stroke : 150mm
- Piston Diameter : 25mm
- Piston Rod Diameter : 18mm

- WSH-BC103 : 1EA
Double Acting Cylinder with Brake



- Operating Pressure : 60 kgf/cm²
- Stroke : 150mm
- Piston Diameter : 25mm
- Piston Rod Diameter : 14mm

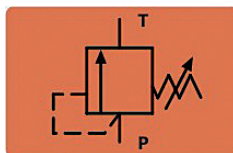
Hydraulic Module

- WSH-BC105 : 4EA
T Type Connector



- Max. Pressure : 120 kgf/cm²
- Inline Type

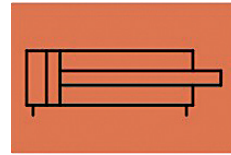
- WSH-BC119 : 2EA
Relief Valve (Direct)



- Max. Pressure : 120 kgf/cm²
- Control : Manual

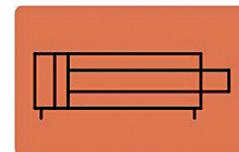


- WSH-BC102 : 2EA
Double Acting Cylinder



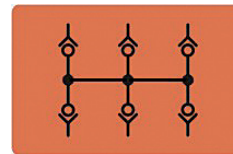
- Operating Pressure : 60 kgf/cm²
- Stroke : 150mm
- Piston Diameter : 25mm
- Piston Rod Diameter : 18mm

- WSH-BC138 : 1EA
Transparent Double Acting Cylinder



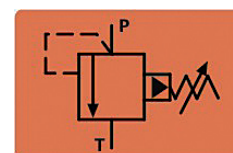
- Operating Pressure : 60 kgf/cm²
- Stroke : 150mm
- Piston Diameter : 25mm
- Piston Rod Diameter : 12mm

- WSH-BC150 : 1EA
Hydraulic Distributor



- Pressure Range : 0 ~ 100 kgf/cm²
- Distributor : 6EA

- WSH-BC120 : 1EA
Relief Valve (Indirect)

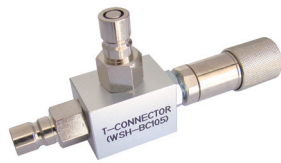


- Max. Pressure : 120 kgf/cm²
- Control : Manual

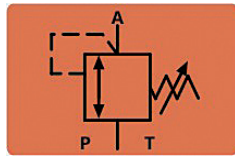
* Product's design and appearance can be changed without any notice.

WSH-4

Hydraulic Trainer

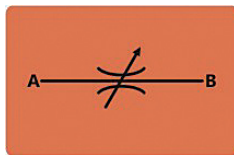


- WSH-BC121 : 1EA
3 Way Pressure Reducing Valve



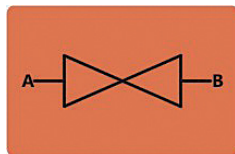
- Max. Pressure : 120 kgf/cm²
- Control : Manual

- WSH-BC204 : 1EA
Both-Way Flow Control Valve



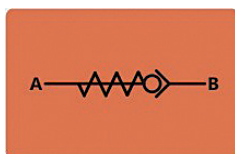
- Max. Pressure : 120 kgf/cm²
- Flow Rate : 10l/min
- Inline Type

- WSH-BC201 : 1EA
Shut-Off Valve



- Max. Pressure : 120 kgf/cm²
- Hand Lever Type
- Inline Type

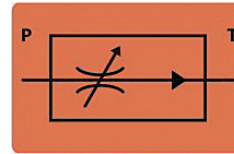
- WSH-BC203 : 1EA
Check Valve



- Max. Pressure : 120 kgf/cm²
- Check Pressure : 5 kgf/cm²
- Inline Type

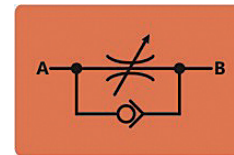


- WSH-BC139 : 1EA
Flow Control Valve



- Max. Pressure : 120 kgf/cm²
- Pressure Compensative Type
- Inline Type

- WSH-BC205 : 2EA
One-Way Flow Control Valve



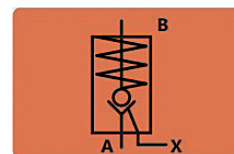
- Max. Pressure : 120 kgf/cm²
- Flow Rate : 10l/min
- Inline Type

- WSH-BC202 : 1EA
Check Valve



- Max. Pressure : 120 kgf/cm²
- Check Pressure : 1 kgf/cm²
- Inline Type

- WSH-BC124 : 1EA
Pilot Control Check Valve



- Max. Pressure : 120 kgf/cm²
- Flow Rate : 10l/min
- Operation : Pilot

01

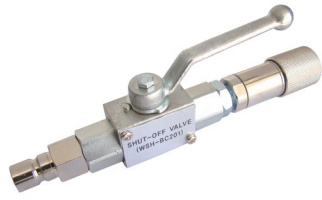
02

03

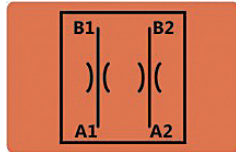
04

WSH-4

Hydraulic Trainer

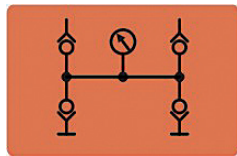


- WSH-BC126 : 1EA
Throttle Valve



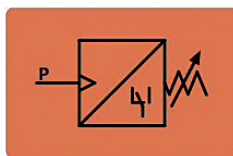
- Max. Pressure : 60 kgf/cm²
- Throttle Diameter : 2mm
- Throttle Length : 30mm

- WSH-BC128 : 2EA
Pressure Gauge with Distributor



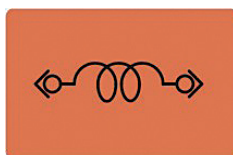
- Pressure Range : 0 ~ 100 kgf/cm²
- Distributor : 4EA

- WSH-BC129 : 1EA
Pressure Switch



- Operation Pressure : 10 ~ 160 kgf/cm²
- Distributor : 4EA

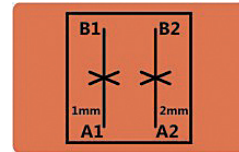
- WSH-BC109 : 1EA
Pipe Resistor 1



- Max. Pressure : 0 ~ 30 kgf/cm²
- 4 φ 1300mm

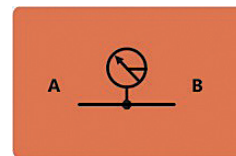


- WSH-BC127 : 1EA
Orifice Valve



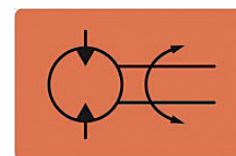
- Max. Pressure : 60 kgf/cm²
- Orifice Length : 0.5mm

- WSH-BC149 : 2EA
Pressure Gauge



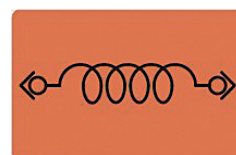
- Pressure Range : 0 ~ 100 kgf/cm²
- Inline Type

- WSH-BC130 : 1EA
Hydraulic Motor



- Max. Pressure : 120 kgf/cm²
- Forward & Reverse Rotation

- WSH-BC110 : 1EA
Pipe Resistor 2



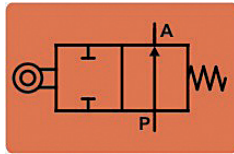
- Max. Pressure : 0 ~ 30 kgf/cm²
- 6 φ 1300mm

* Product's design and appearance can be changed without any notice.

WSH-4

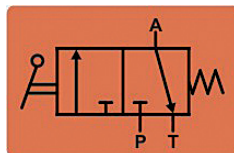
Hydraulic Trainer

- WSH-BC111 : 1EA
2/2Way Limit Valve



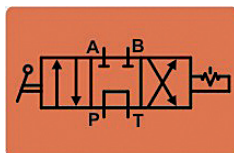
- Max. Pressure : 120 kgf/cm²
- Normal Open
- Return : Spring

- WSH-BC115 : 1EA
3/2Way Hand Lever Valve



- Max. Pressure : 120 kgf/cm²
- Return : Spring

- WSH-BC118 : 1EA
4/3Way Manual Valve

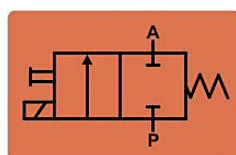


- Max. Pressure : 120 kgf/cm²
- PT Connected
- Return : Spring

■ Electro - Hydraulic Module

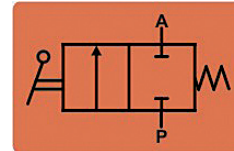


- WSH-BC131 : 1EA
2/2Way Solenoid Valve



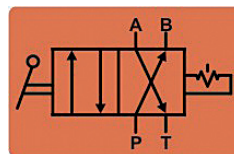
- Max. Pressure : 120 kgf/cm²
- Normal Close
- DC 24V

- WSH-BC113 : 1EA
2/2Way Hand Lever Valve



- Max. Pressure : 120 kgf/cm²
- Normal Close
- Return : Spring

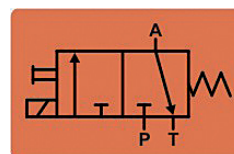
- WSH-BC117 : 1EA
4/2Way Manual Valve



- Max. Pressure : 120 kgf/cm²
- Return : Spring



- WSH-BC133 : 1EA
3/2Way Solenoid Valve



- Max. Pressure : 120 kgf/cm²
- DC 24V

01

02

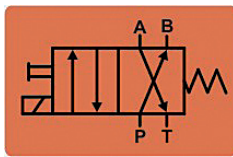
03

04

WSH-4

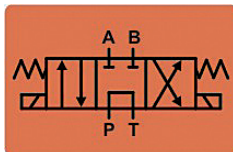
Hydraulic Trainer

- WSH-BC135 : 1EA
4/2Way Solenoid Valve



- Max. Pressure : 120 kgf/cm²
- DC 24V

- WSH-BC146 : 1EA
4/3Way Double Solenoid Valve



- Max. Pressure : 120 kgf/cm²
- PT Connected (By-Pass)
- DC 24V

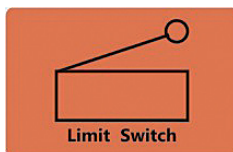
- WSH-BC148 : 1EA
4/3Way Double Solenoid Valve



- Max. Pressure : 120 kgf/cm²
- ABT Connected
- DC 24V

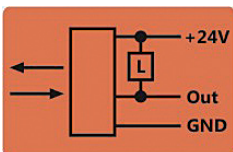
■ Electric Module

- WSP-A4201 : 4EA
Limit Switch



- Contact : 1c
- DC 24V
- Left & Right

- WSP-A4203 : 1EA
Photo Sensor



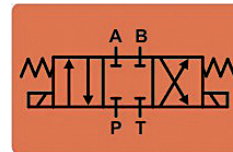
- Detection Distance : 100mm
- NPN Open Collector
- DC 10 ~ 30V

- WSH-BC145 : 1EA
4/2Way Double Solenoid Valve



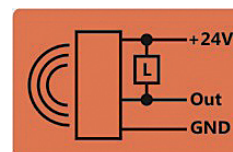
- Max. Pressure : 120 kgf/cm²
- DC 24V

- WSH-BC147 : 1EA
4/3Way Double Solenoid Valve



- Max. Pressure : 120 kgf/cm²
- PABT(All) Blocked
- DC 24V

- WSP-A4202 : 1EA
Proximity Sensor



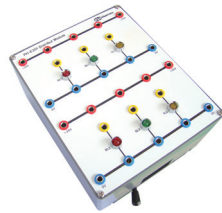
- Detection Distance : 8mm
- NPN Open Collector Type
- DC 10 ~ 30V

* Product's design and appearance can be changed without any notice.

WSH-4

Hydraulic Trainer

■ Electric Sequence Module



- PH-E301 : 1EA
Electric Distribution Module
- Lamp(Red/Green/Yellow) : 6EA



- PH-E302 : 1EA
Push Button Module
- Push Button (Non-Lock Type) : 2EA
- Push Button (Lock Type) : 1EA
- Contact : 2c



- PH-E303 : 3EA
Relay Module
- Power : DC 24V
- Relay : 3EA
- Contact : 4c
- PH-E305 : 1EA
Emergency Stop Button Module
- Contact : 1a, 1b
- Lock Type Switch

- PH-E304 : 1EA
Lamp & Buzzer Module
- Power : DC 24V
- Lamp (Red & Green) : 4EA
- Buzzer : 1EA

- PH-E307 : 1EA
Counter Module
- Power : DC 24V
- Up/Down Counter
- Preset : 0 ~ 9999
- Input Signal : Up / Down / Reset
- Contact : 1c

- PH-E306 : 1EA
Timer Module
- Power : DC 24V
- On Delay Timer : 1EA
- Off Delay Timer : 1EA
- Delay Time : 0 ~ 99sec
- Contact : 2a, 2b
- PH-E308 : 1EA
DC Power Switch Module
- Input Power
1 Phase 220 ~ 240V / 50/60Hz
- Output : DC 24V / 2A
- Short Circuit Protection Function & Alarm

Accessory

- Experiment Manual : 1Copy
- Test Lead (Banana Plug) : 1Unit
- Extra Fitting & Coupling : 1Unit
- Dust Cover : 1EA
- Power Cable : 1EA
- Hydraulic Oil (ISO VG46) : 20l
- Pressure Remover : 1EA

Option

- Magnetic Hydraulic Symbol : 1Set

01

02

03

04