

WSB-DMU

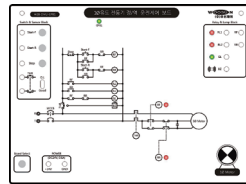
Demonstration Unit

Introduction

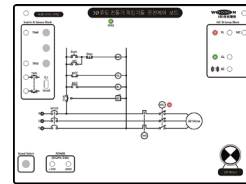
- DMU (Demonstration Unit) is designed for P. L. C application experiment and it consists of a main unit and 9 experiment masks.
- It is possible to study P. L. C application part without any P. L. C application trainer.
- It is easy to connect with P. L. C trainer.



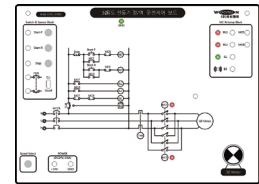
[WSB-DMU]



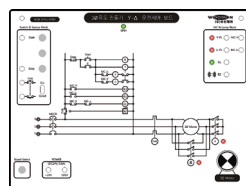
[WSB-DMU-GPB1]



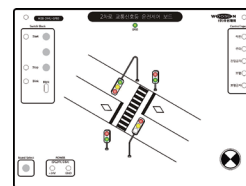
[WSB-DMU-GPB2]



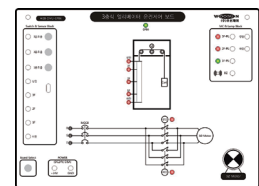
[WSB-DMU-GPB3]



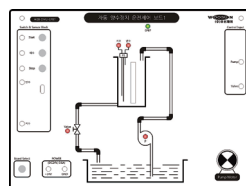
[WSB-DMU-GPB4]



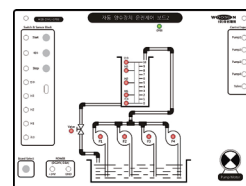
[WSB-DMU-GPB5]



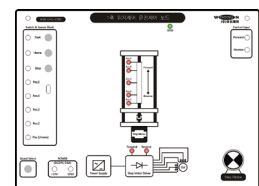
[WSB-DMU-GPB6]



[WSB-DMU-GPB7]



[WSB-DMU-GPB8]



[WSB-DMU-GPB9]

[DMU Unit & Experiment Mask]

Specification

■ Demonstration Unit

- Main Voltage : DC 24V
- Board Select Switch
- Input Switch & Output Lamp & Buzzer
- Signal Input & Output Terminal
- Level Meter & DC Motor

■ Experiment Mask

- GPB01 : 1 ϕ Induction Motor For. / Rev. Control
- GPB02 : 3 ϕ Induction Motor Control
- GPB03 : 3 ϕ Induction Motor For. / Rev. Control
- GPB04 : 3 ϕ Induction Motor Y- Δ Control
- GPB05 : 2-Way Traffic Light Control
- GPB06 : 3 Floor Elevator Control
- GPB07 : Water Supply Control 1
- GPB08 : Water Supply Control 2
- GPB09 : 1-Axis Position Control Board.

Accessory

- Experiment Manual : 1 Copy
- Aluminum Storage Bag : 1 EA

* Product's design and appearance can be changed without any notice.