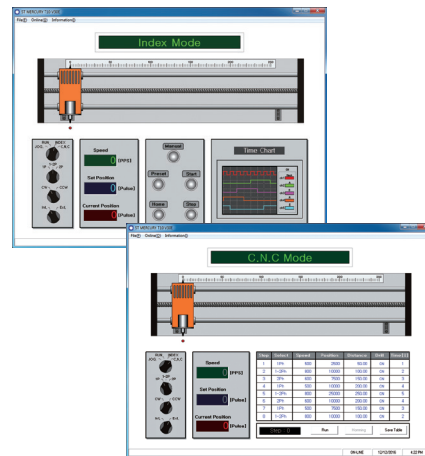
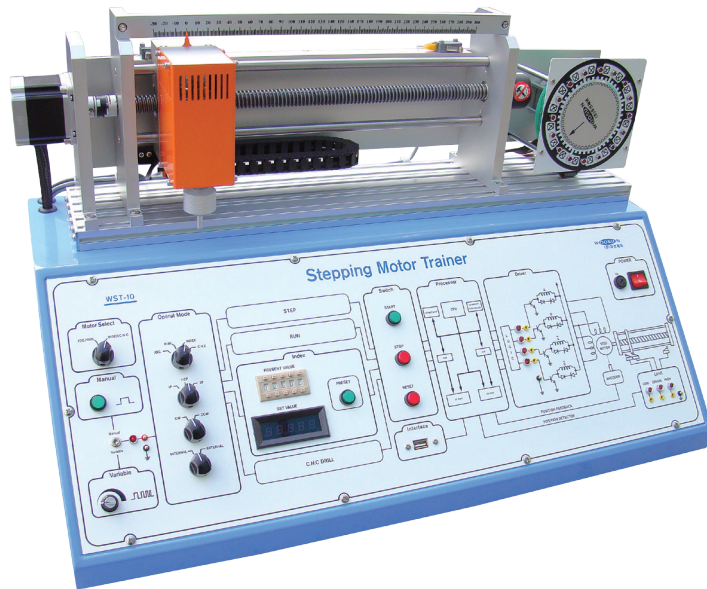


WST-10

Stepping Motor Trainer



Experiment

- 1 Phase mode experiment (Jog. Mode)
- 1-2Phase mode experiment (Jog. Mode)
- 2 Phase mode experiment (Jog. Mode)
- Max. slew & starting frequency in 1 phase excitation(Run Mode)
- Max. slew & starting frequency in 1-2 phase excitation(Run Mode)
- Max. slew & starting frequency in 2 phase excitation(Run Mode)
- Index mode experiment in 1 phase excitation
- Index mode experiment in 1-2 phase excitation
- Index mode experiment in 2 phase excitation
- Application of a stepping motor(C.N.C Operation)

Specification

- Main Voltage : 1 Phase 220~240V / 50/60Hz
- Operation Mode Block
- Switch Block
- Driver Block
- Limit Block
- Actuator
 - Stepping Motor 1
 - * Position Control
 - * 2 Phase & Unipolar Type
- Stepping Motor 2
 - * Rotor Control
 - * 2 Phase & Unipolar Type
- Encoder
- Rotor & Stator
- Pulse Generator Block
- INDEX Operation Block
- Interface Block

Accessory

- Experiment Manual : 1 Copy
- Communication Cable(USB) : 1EA
- Test Lead (Banana Plug) : 1Unit
- Power Cable : 1EA
- Monitoring Software : 1Copy
- Dust Cover : 1EA